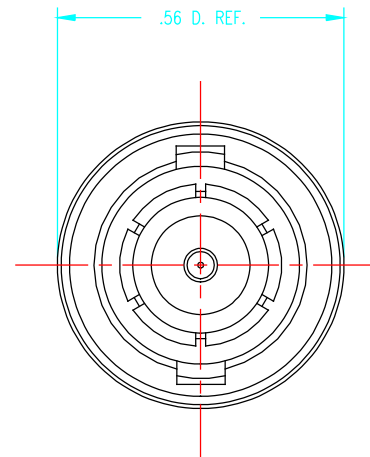
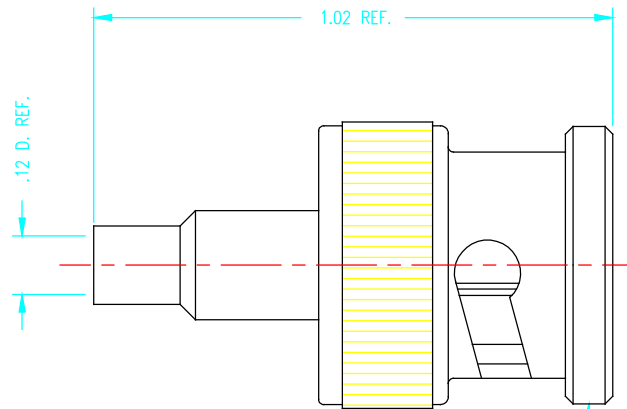


DASH NO.	M CODE	MADE FROM
----------	--------	-----------

GSD

KC-59-557 M06

REVISIONS	
ISSUE	CHANGES
4	CN 36487 E REDRAWN KH 07/31/95
5	CN 37053 D JJS 07/08/96
G	ER069641 JI 09/07/17



STAMP: KINGS KC-59-557 M06

NOTES:

- FOR USE WITH RG-174, 179, 187, 188 & 316 CABLE GROUPS.
- FOR CABLING INSTRUCTIONS SEE CP-5407.
- FOR CRIMPING USE DIE KTH-2138.
- INTERFACE PER MIL-STD-348, FIG. 301-1.
- MARK PACKAGE: KINGS KC-59-557 M06  
XXX (DATE CODE)
- MATERIALS:  
INSULATORS: PTFE, ASTM-D-4894  
GASKET: SIL. RUB., A-A-59588  
K-GRIP SLEEVE: COM. BRONZE, ASTM-B-135  
SPRING WASHER }  
OUTER CONTACT } BER COP., ASTM-B-196  
ALL OTHER PARTS: BRASS, ASTM-B16
- FINISHES:  
SPRING WASHER: SILVER PLATE PER ASTM B700  
CENTER CONTACT: HARD GOLD PLATE PER ASTM B488  
ALL METAL PARTS: KINGS TARNISH RESISTANT NICKEL FINISH (TR-5)
- ELECTRICAL CHARACTERISTICS:  
NOMINAL IMPEDANCE: 50 OHMS  
VOLTAGE RATING: 500 VRMS  
FREQUENCY RANGE: DC TO 4 GHz

KAM5936

SCALE	4:1	
APPROX SURFACE AREA		
WAS:	E-7339	
USED ON		
REF:		
PLUG, BNC		
DRAWN	KH	DATE 07/31/95
DESIGN	MJB	DATE 08/01/95
APPR.		DATE

GSD

 <b>KINGS</b> ELECTRONICS CO., INC. TUCKAHOE, NEW YORK 10707	
KC-59-557 M06	